



QUELIMANE COASTAL CITY ADAPTATION **PROJECT**

EVENT: “Financing-urban-adaptation-to-climate-change-
impacts-mapping-of-existing-initiatives”

*The Case of Quelimane City Municipality in
Mozambique*

Paris –France - 11TH DECEMBER 2015

QUELIMANE COASTAL CITY ADAPTATION PROJECT

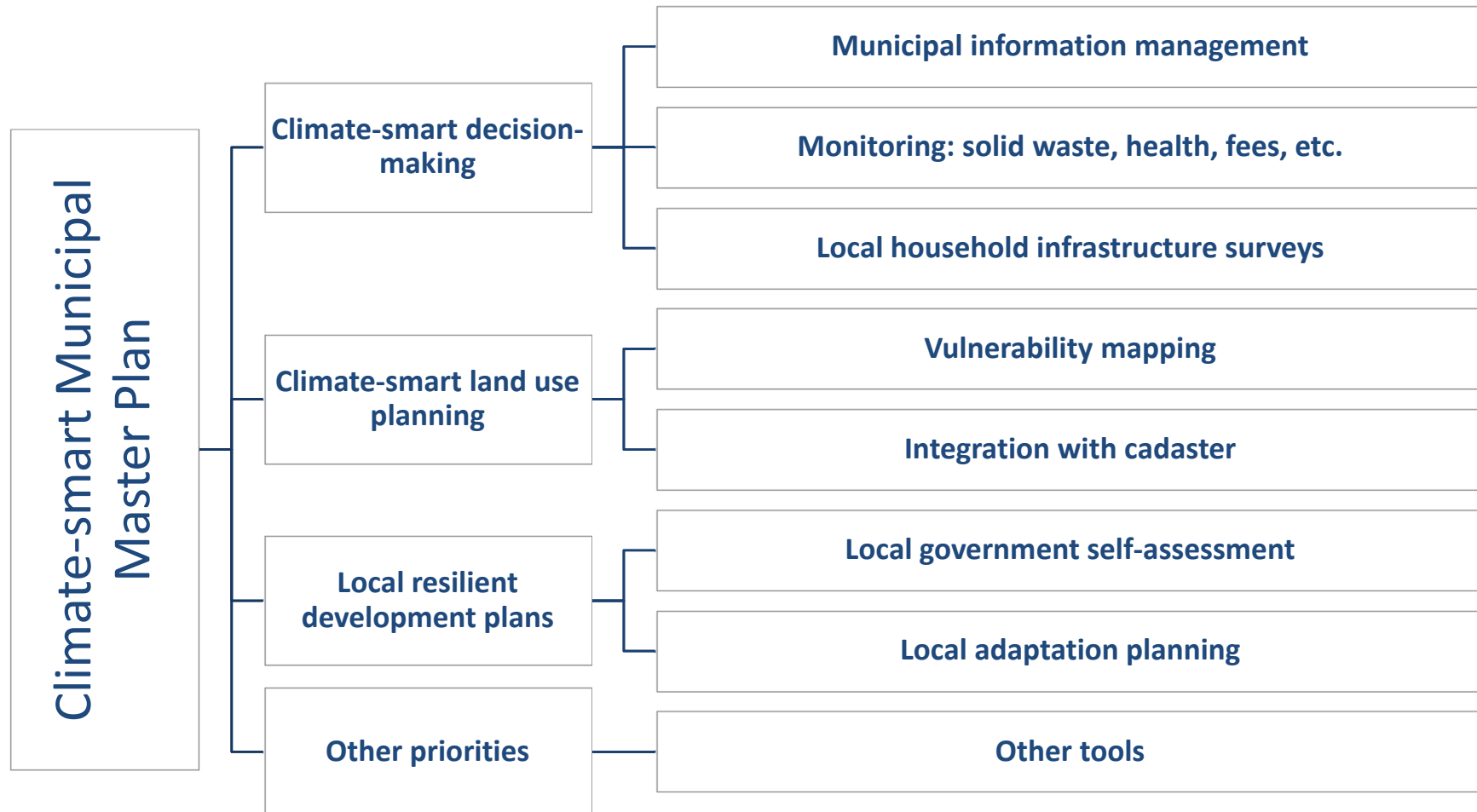
Reality Check: A stepwise approach to adaptation planning and implementation in Quelimane coastal city -Mozambique

Manuel de Araújo (PhD)

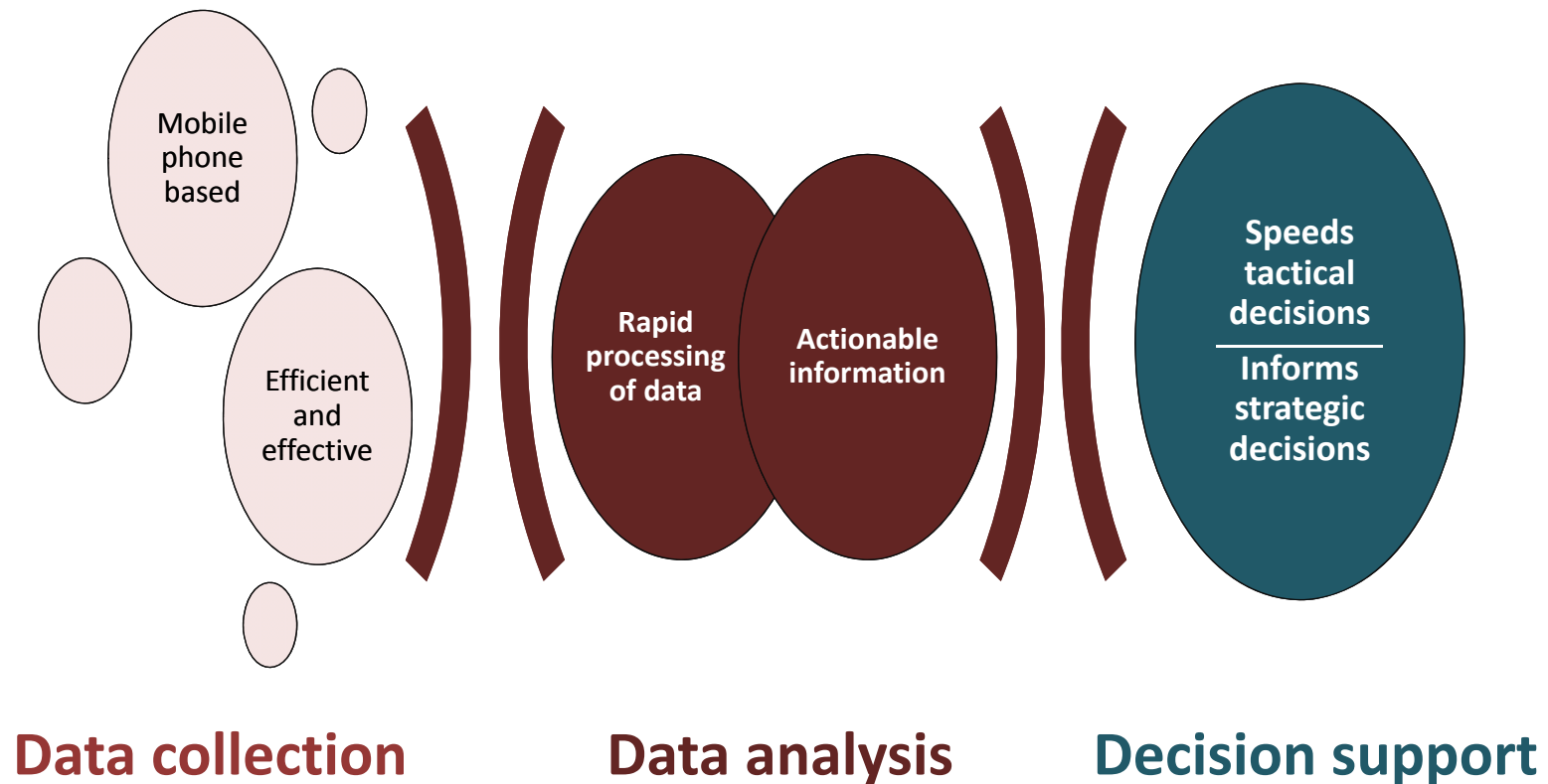
Mayor of Quelimane Municipal Council City, Mozambique

**Local Adaptation Planning, Vulnerability Mapping and Other
Climate Change Adaptation Tools**

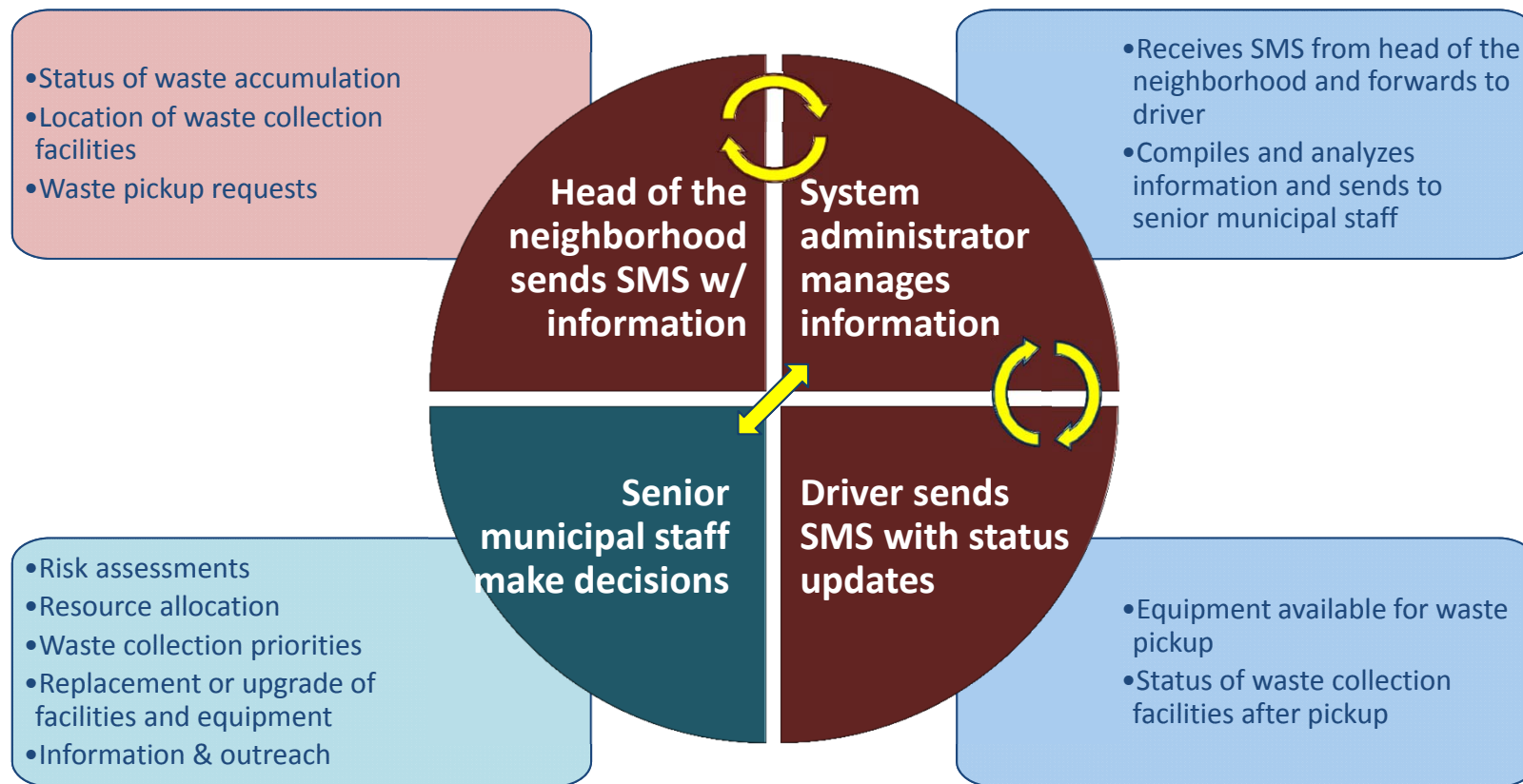
Stepwise integration of adaptation planning



Features of the Municipal Information Management System



Collecting, managing and using solid waste data



Applications of the MIMS currently implemented and under development

-  Solid waste & sanitation
-  Water supply monitoring & management
-  Health & ambulance management
-  Land use conflict resolution
-  Market fee verification

The challenge: Training data senders and information managers

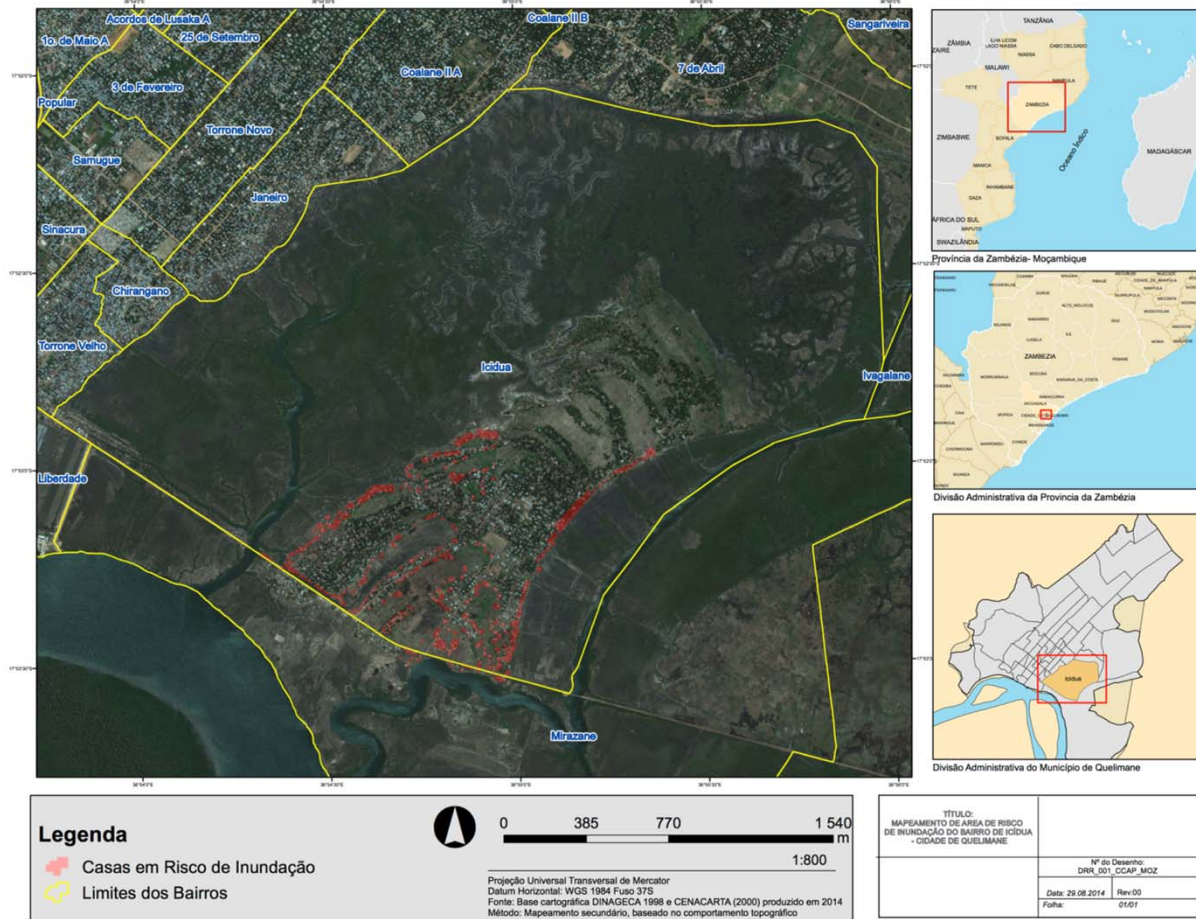


Expanding partnerships: Students conduct household infrastructure survey

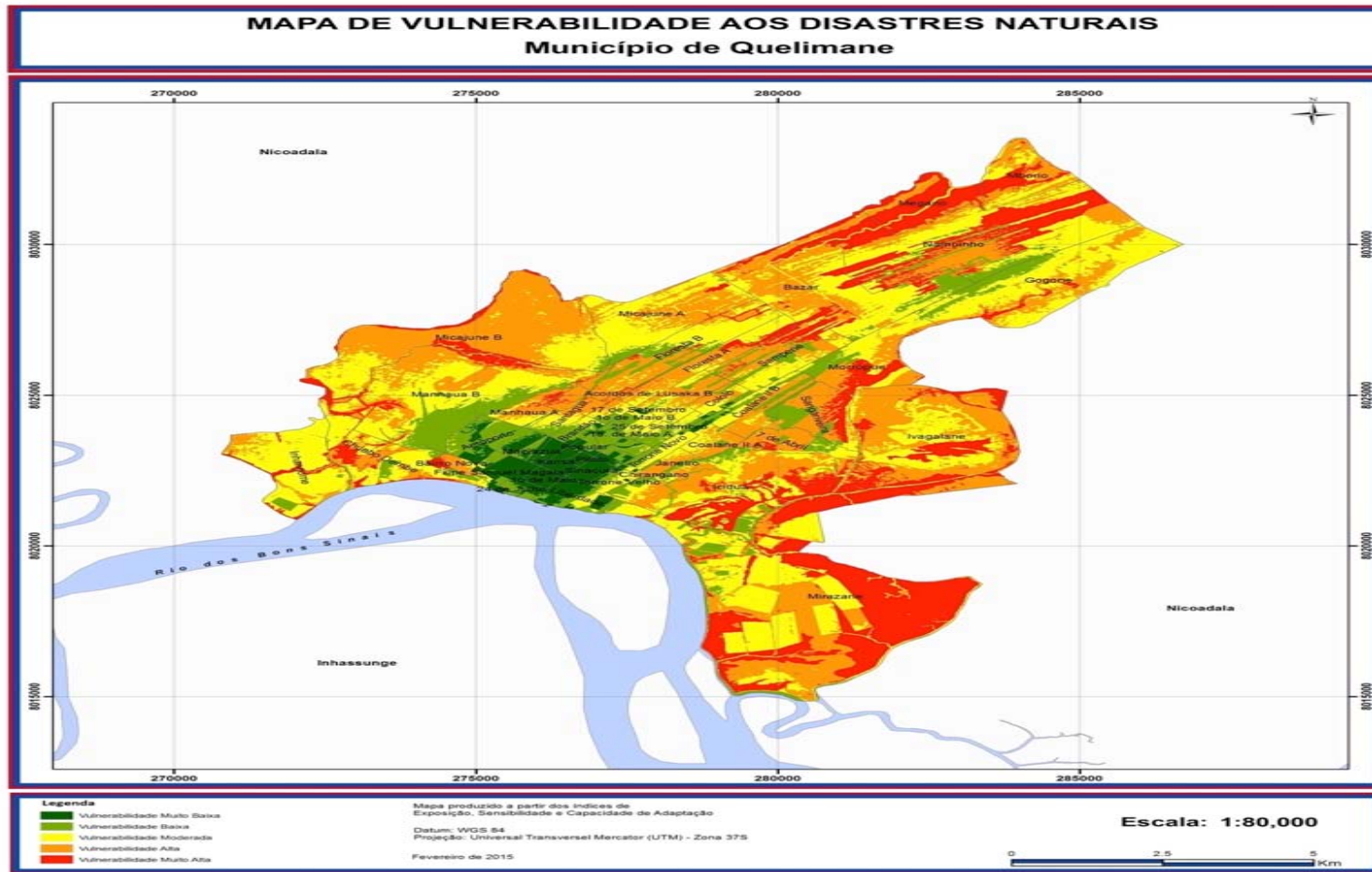
- Students surveying:



Icídua, Quelimane

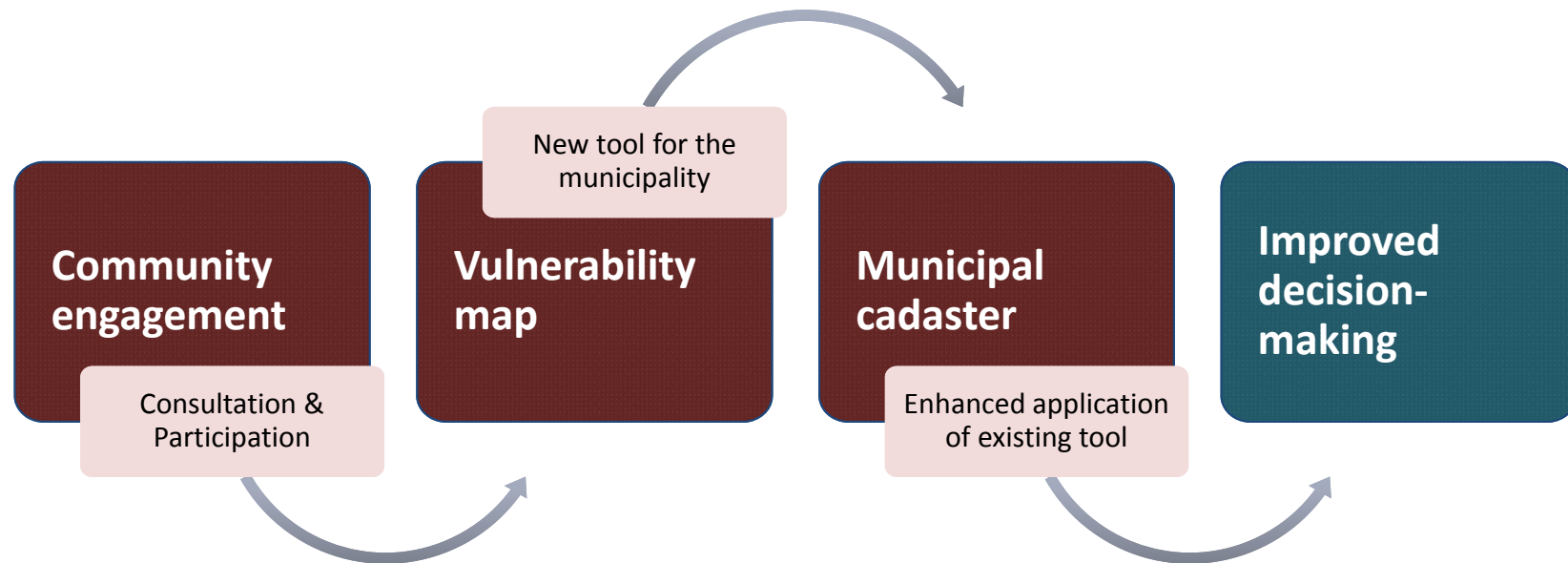


Vulnerability map



A stepwise approach to go from consultation to better decisions

- Consultation to better decisions



Ten Essentials for Making Cities Resilient

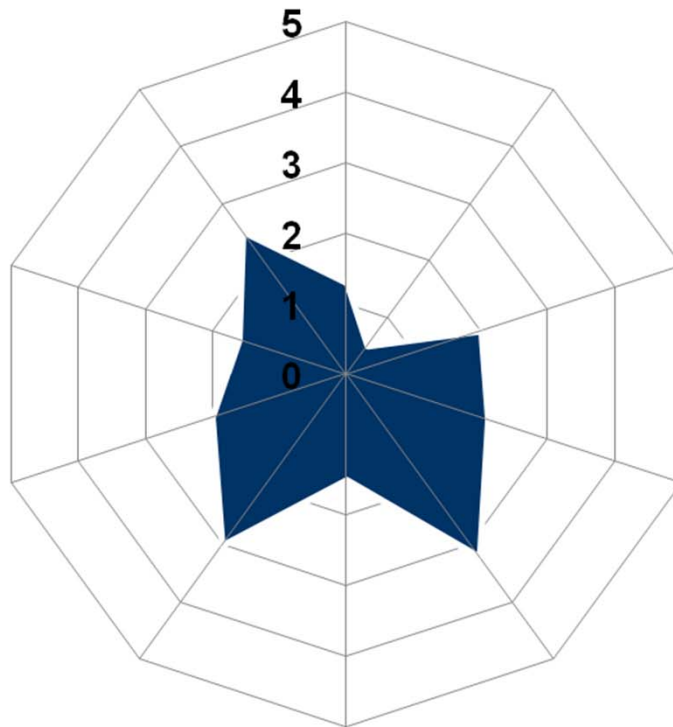
Established a baseline to monitor progress toward climate change adaptation and resiliency

1. Engage, share understanding, and coordinate
2. Create financing and incentives
3. Identify and understand perils, probabilities and impacts
4. Make critical infrastructure disaster resilient
5. Make education and healthcare infrastructure disaster resilient
6. Apply risk-aware planning, land use and building codes
7. Build public awareness and capacity
8. Enhance and protect ecosystem services
9. Create warning systems and rehearse preparedness
10. Learn and build back better

*Developed by UNISDR as part of “Making Cities Resilient” campaign; the ten essentials align with the Hyogo Framework for Action 2005-2015; see <http://www.unisdr.org/campaign/resilientcities/toolkit/essentials>

Summary of Scores for Quelimane

- Average score = 2.0



Description of scores

5 - **Comprehensive achievement** has been attained, with the commitment and capacities to sustain efforts at all levels.

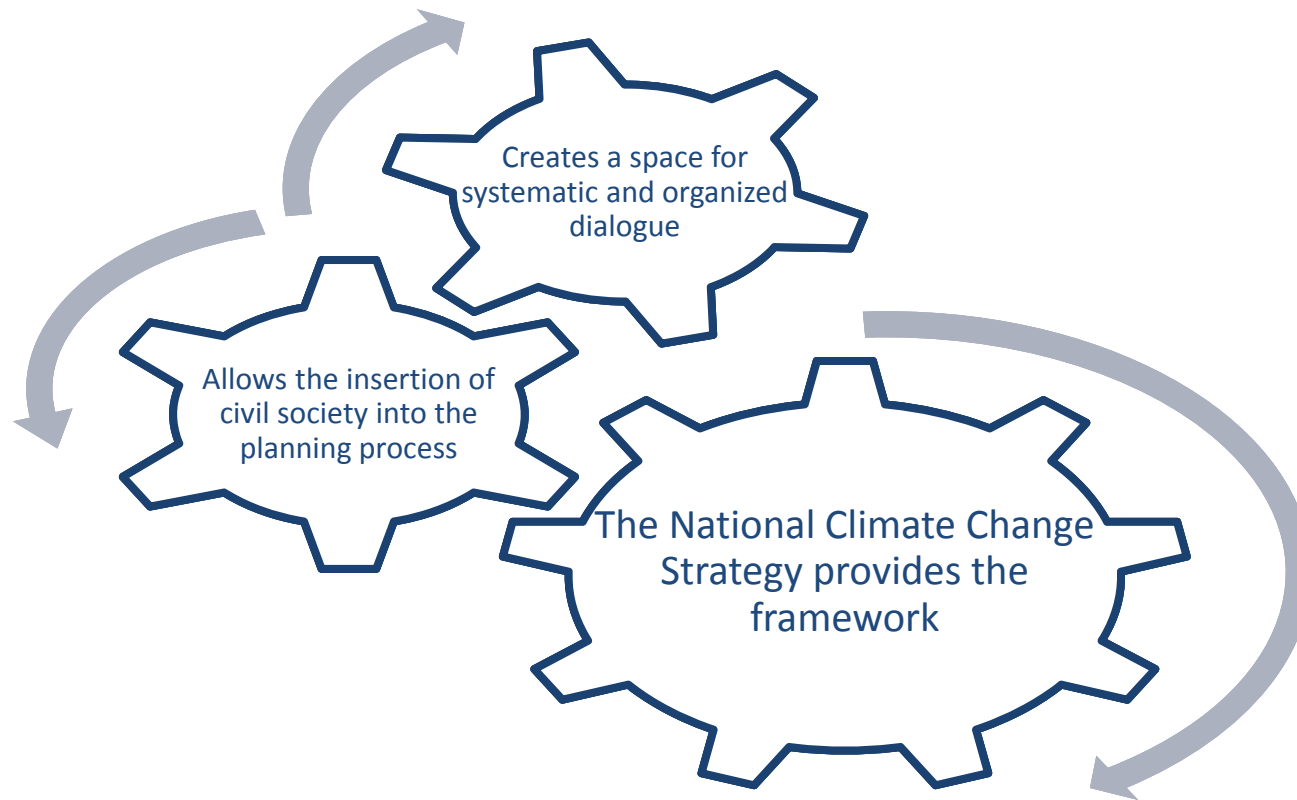
4 - **Substantial achievement** has been attained, but with some recognized deficiencies in commitment, financial resources or operational capacities.

3 - There is some institutional **commitment and capacities to achieving disaster risk reduction** but progress is not comprehensive or substantial.

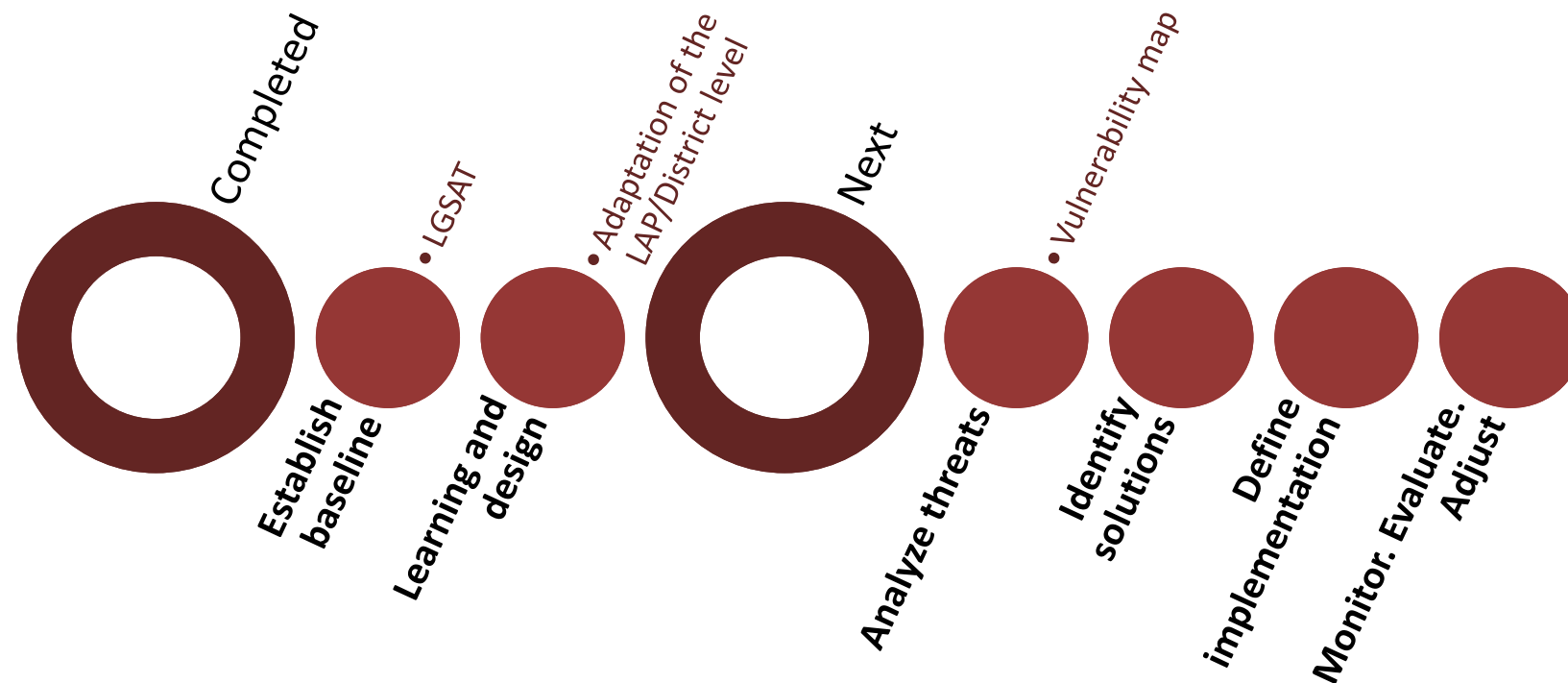
2 - Achievements have been made but are **incomplete**, and while improvements are planned, the commitment and capacities are limited.

1 - Achievements are **minor** and there are few signs of planning or forward action to improve the situation.

Local adaptation plans: Context



Local adaptation plans: Process



QUELIMANE RUMO AOS BONS SINAIS

THANK FOR YOUR ATTENTION

PARIS, 11TH DECEMBER 2015

By Manuel de Araujo (PhD)